

When Mommies Die: A Maternal Mortality Panel Data Supporting Comments

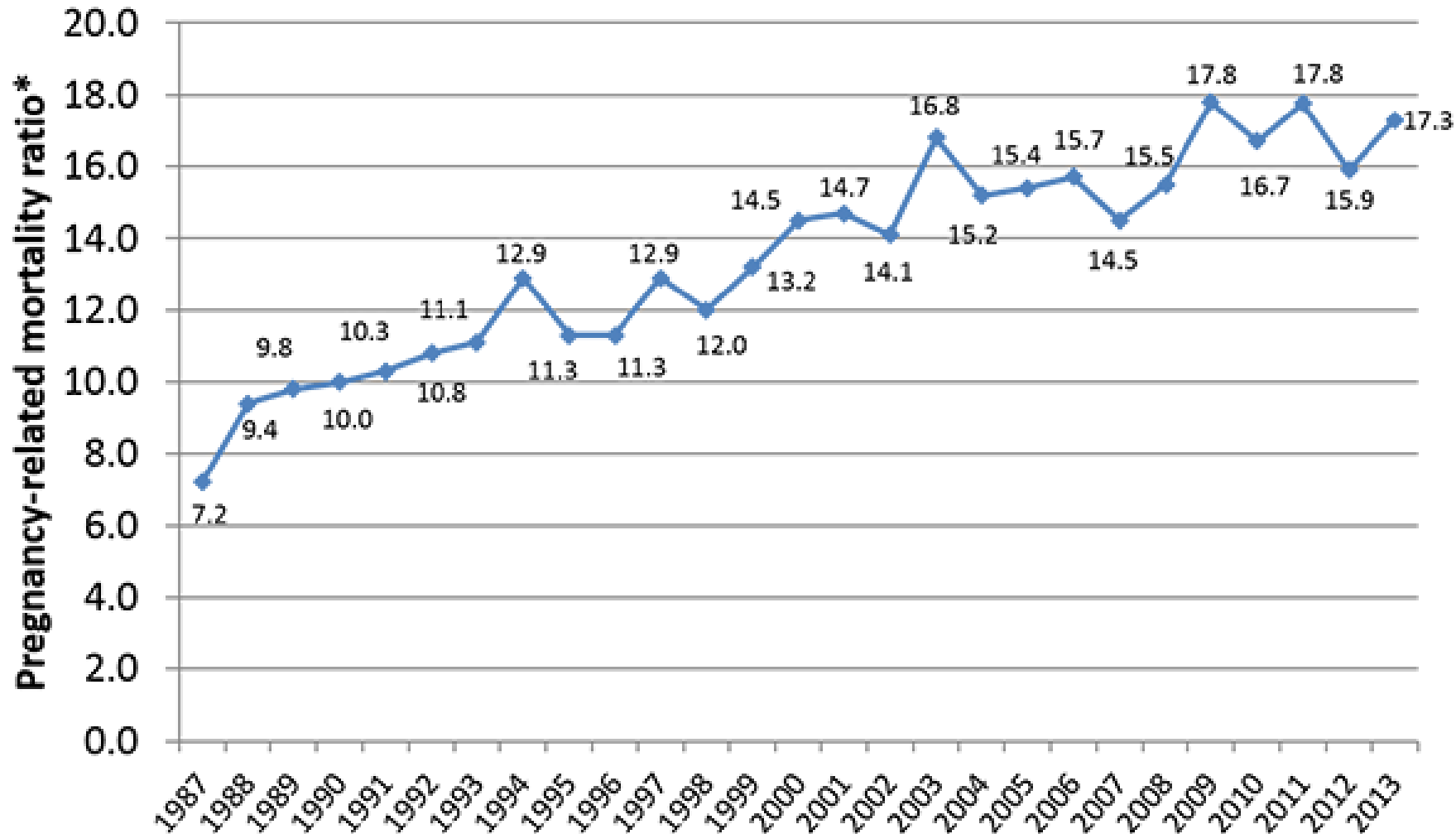
Eugene Declercq, PhD
Boston University School of Public Health

2018 NMQF Leadership Summit on Health Disparities

April 17, 2018

Ritz Carlton, Washington, DC

Pregnancy Related Mortality, U.S., 1987-2013



Racial Disparities

Rates for 2011-13:

- 12.7** white women
- 43.5** black women
- 11.0** Hispanic
- 14.4** other races

Source: CDC.

Creanga. Pregnancy-Related Mortality in the United States. *Obstet Gynecol* 2017.

*Note: Number of pregnancy-related deaths per 100,000 live births per year.

A reasonable & conservative estimate of U.S. Maternal Mortality

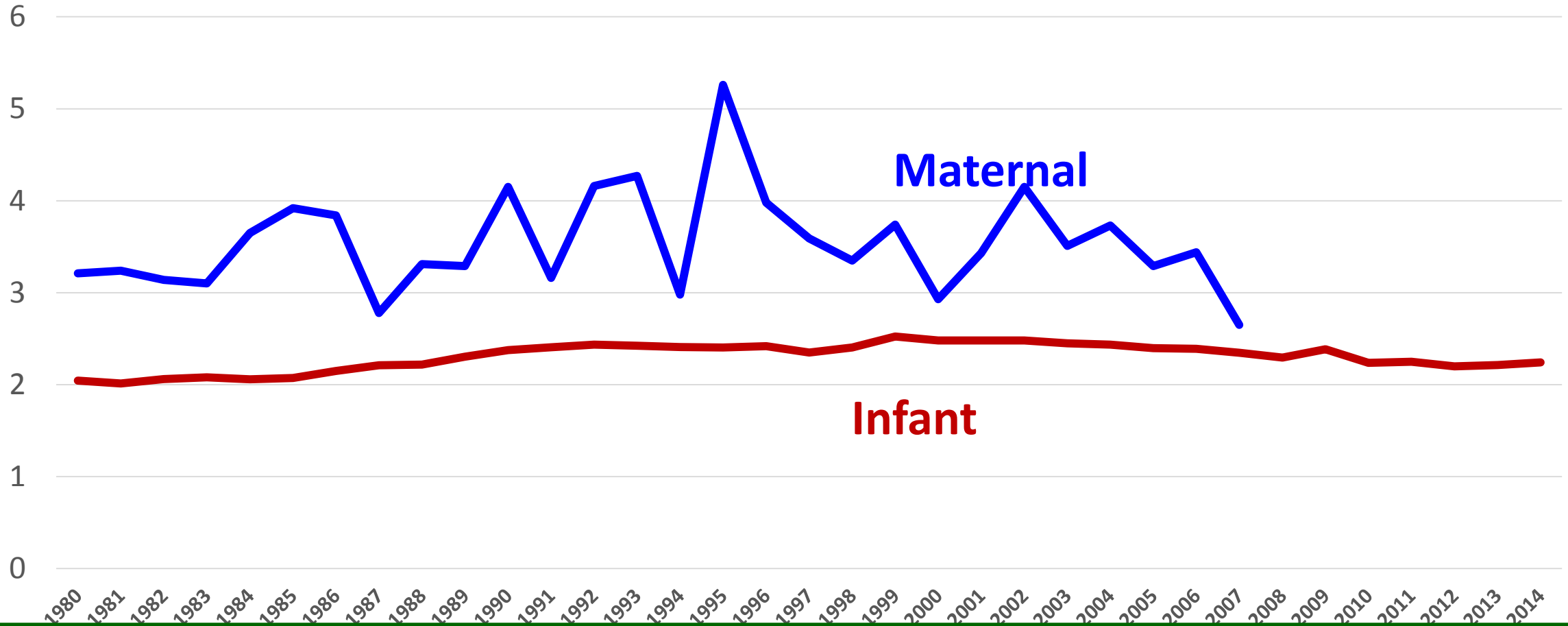
*Adjusting the CDC Pregnancy Related Mortality data
to reflect a maternal mortality rate*

Estimated for 2011-2013 (per 100,000 live births):

- **All women** **14.8**
- Non-Hispanic white women **11.3**
- Non-Hispanic black women **36.2**
- Hispanic women **10.0**

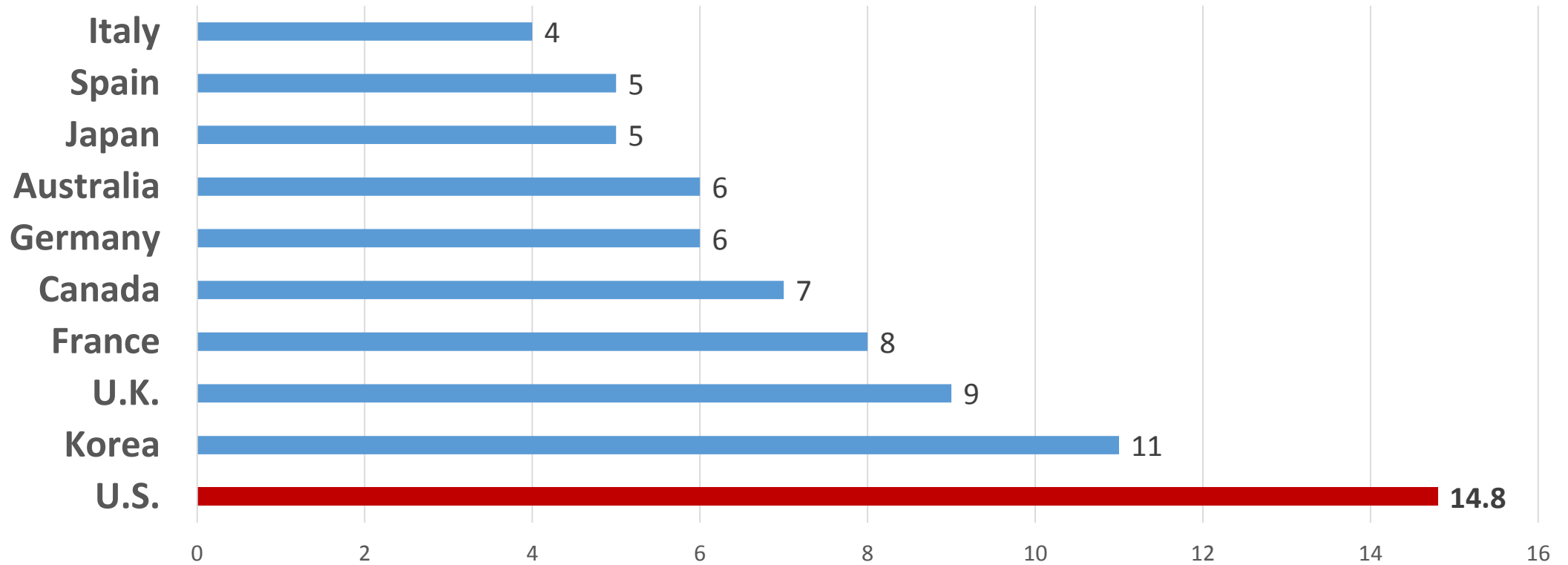
- **Black-white disparity** **3.2**

U.S. Infant & Maternal Mortality Black to White Ratios of 1980-2014



Why is disparity greater for maternal mortality than infant mortality?

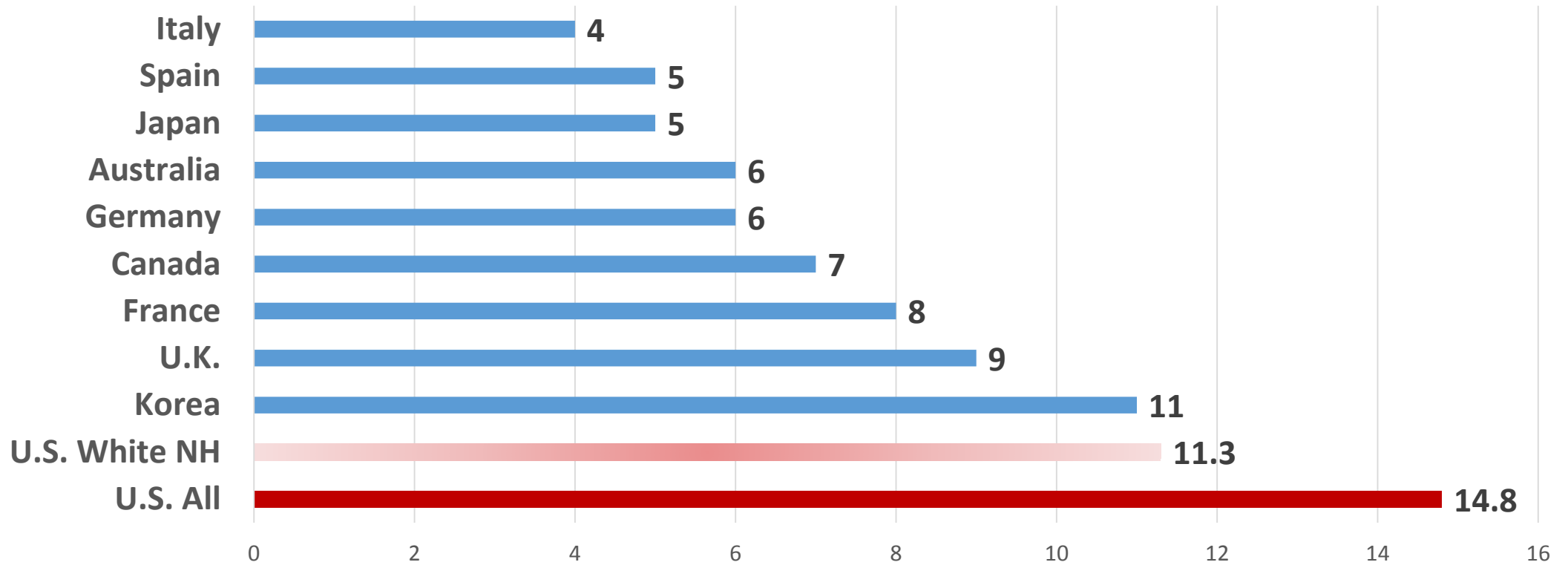
U.S. MMR* Compared to Countries with 300,000+ births, 2014, using WHO Estimates



* Maternal Mortality per 100,000 births

Source: *Maternal Mortality: 1990 to 2015* Estimates by WHO, UNICEF, UNFPA, World Bank Group & UN Population Division. Geneva: 2015.

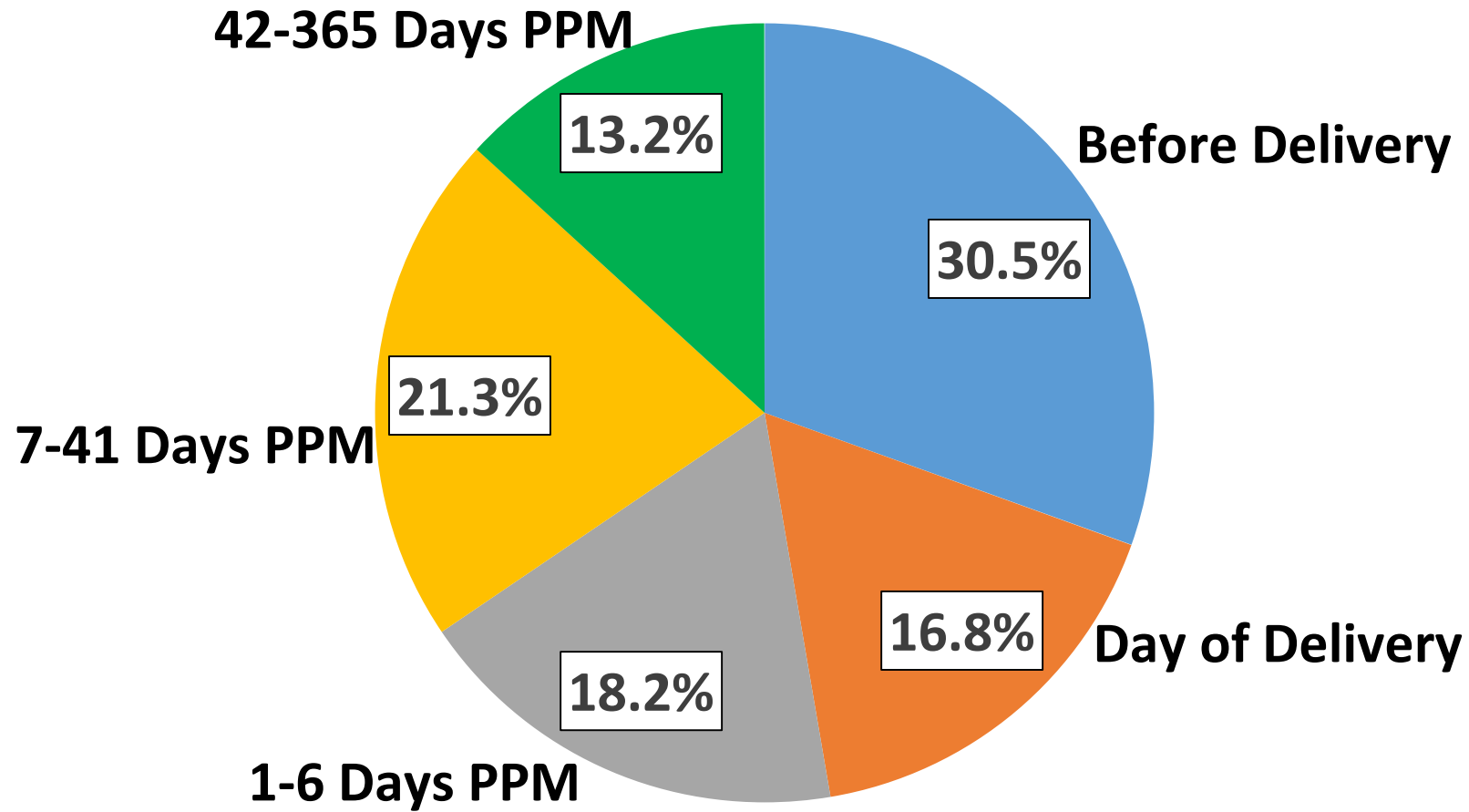
U.S. MMR* Compared to Countries with 300,000+ births, 2014, using WHO Estimates



* Maternal Mortality Ratio per 100,000 births

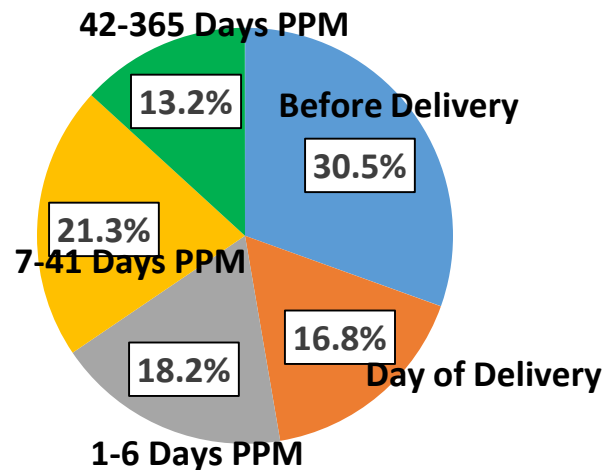
Source: *Maternal Mortality: 1990 to 2015* Estimates by WHO, UNICEF, UNFPA, World Bank Group & UN Population Division. Geneva: 2015.

Timing of Maternal Deaths



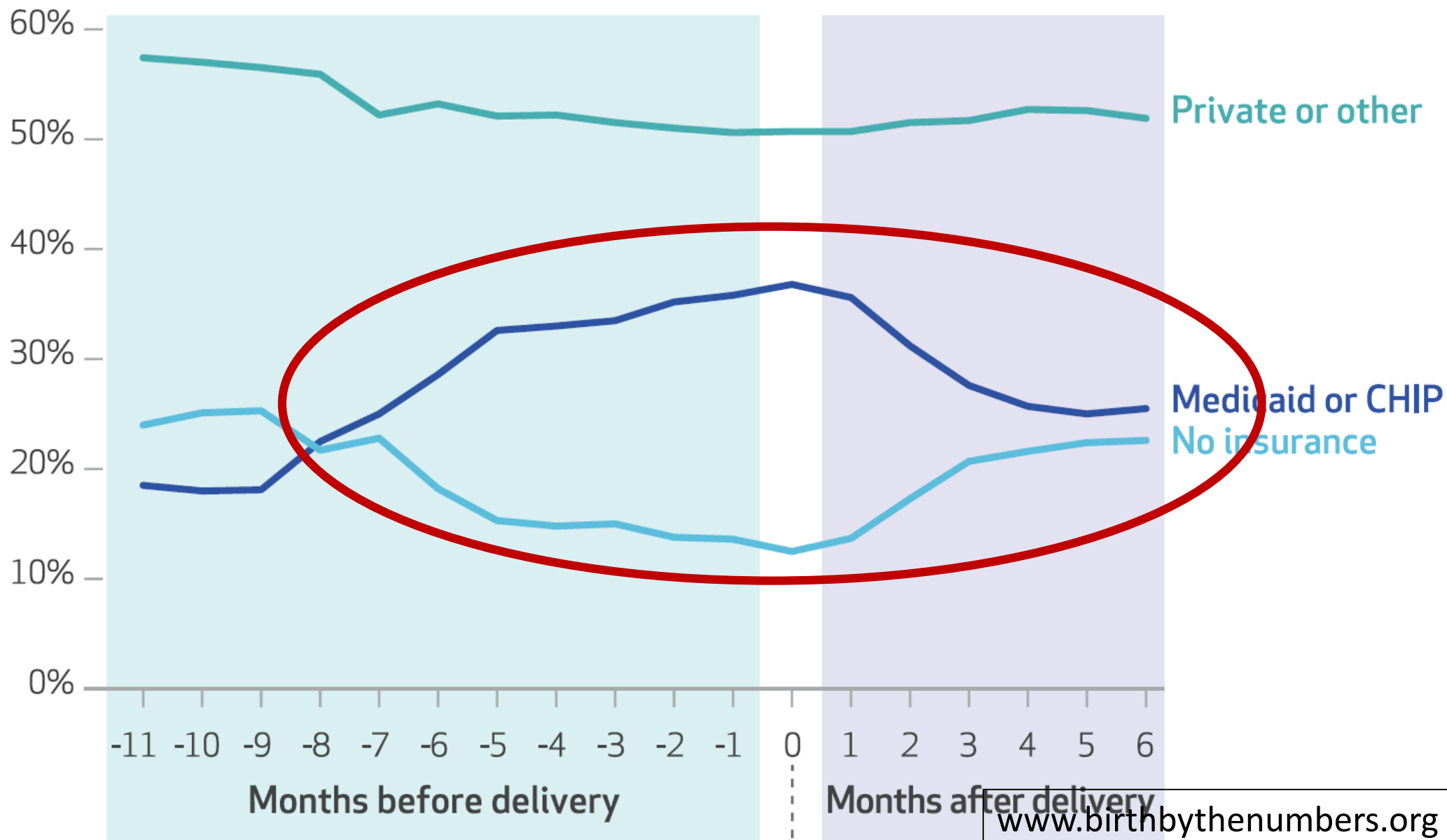
Source: Adapted from Creanga A et al. Pregnancy Related Mortality in the U.S., 2011-2013. *Obstet & Gynec* 2017.

Variation in Medicaid Eligibility by Pregnancy Status

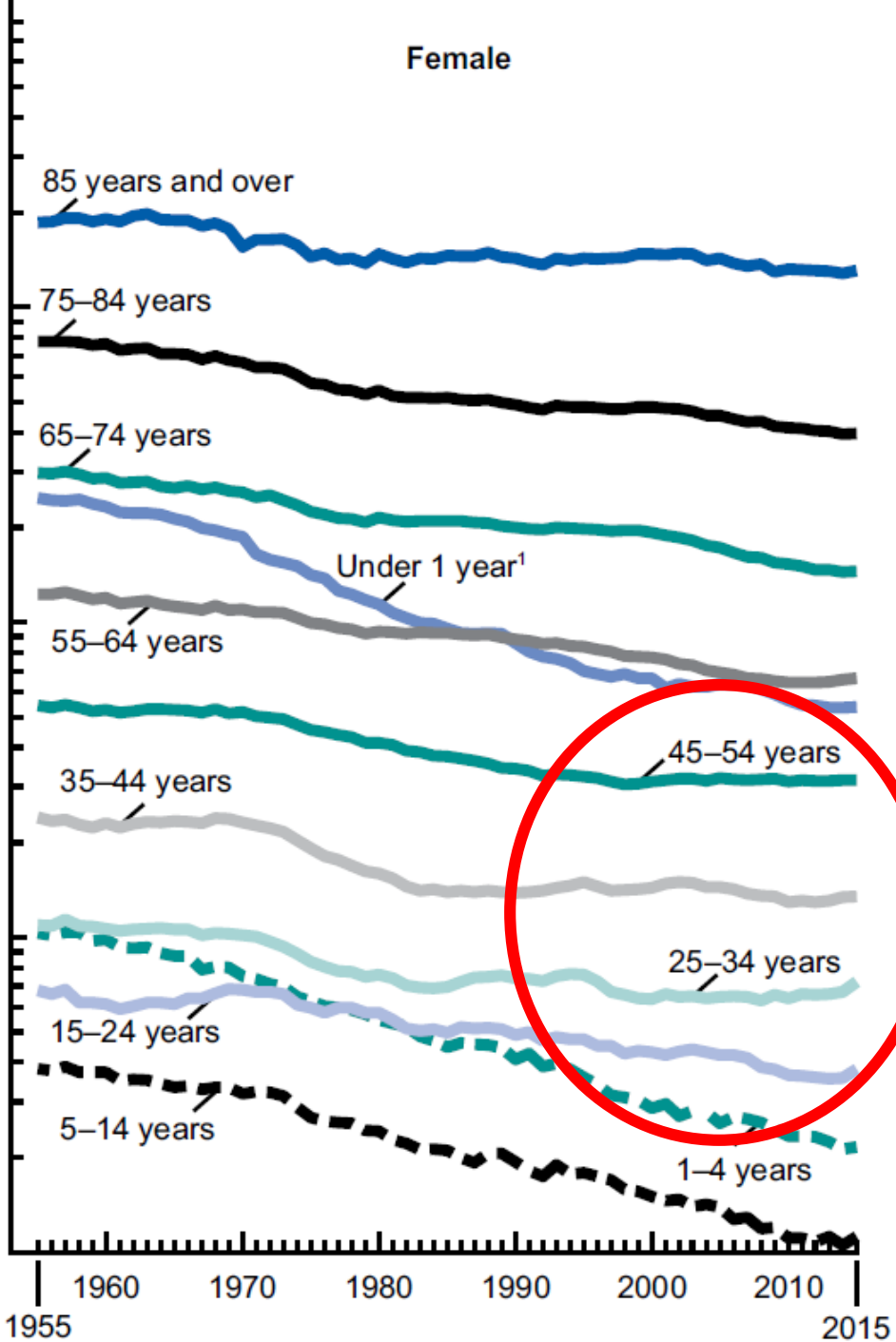


As of 1/1/17	Medicaid Eligibility	
	Pregnancy	Adult in Family
Alabama	146%	18%
California	213%	138%
Connecticut	263%	155%
Florida	196%	33%
Georgia	225%	37%
Iowa	380%	138%
Louisiana	214%	138%
Maine	214%	105%
Massachusetts	205%	138%
New Hampshire	205%	138%
New York	223%	138%
Ohio	205%	205%
Pennsylvania	220%	138%
Texas	203%	18%
Wisconsin	306%	100%

Percentages of women who gave birth in the period 2005-13, by health insurance type and month before or after delivery



Source: Daw J.
Health Affairs
2017; 36:598-606



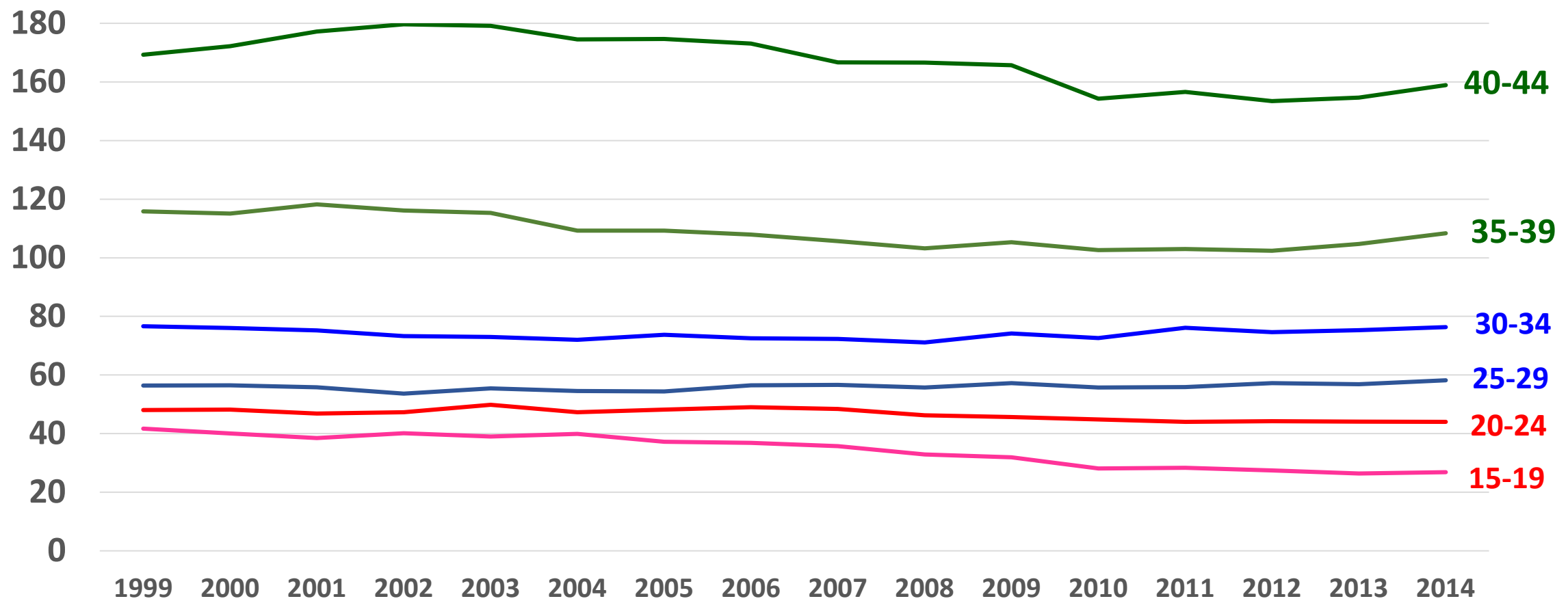
While death rates for women have declined in other age groups, the death rates of women of reproductive age have not declined

Death rates, by age, females: United States, 1955–2015

Number of female deaths, 20-49 in 2015
73,873.
Maternal deaths = ~1% of all those.

Source: NCHS. *Deaths, Final Data for 2015*

Female Death Rates (per 100,000) by Age, 1999-2014



Source: National Vital Statistics System, unpublished tables. <https://www.cdc.gov/nchs/nvss/mortality/hist290.htm>

www.birthbythenumbers.org



For more information visit other sections of the birth by the numbers website

o uouias



Twitter: @BirthNumbers

Email: birthbynumbers@gmail.com

FACEBOOK: www.facebook.com/BirthByTheNumbers